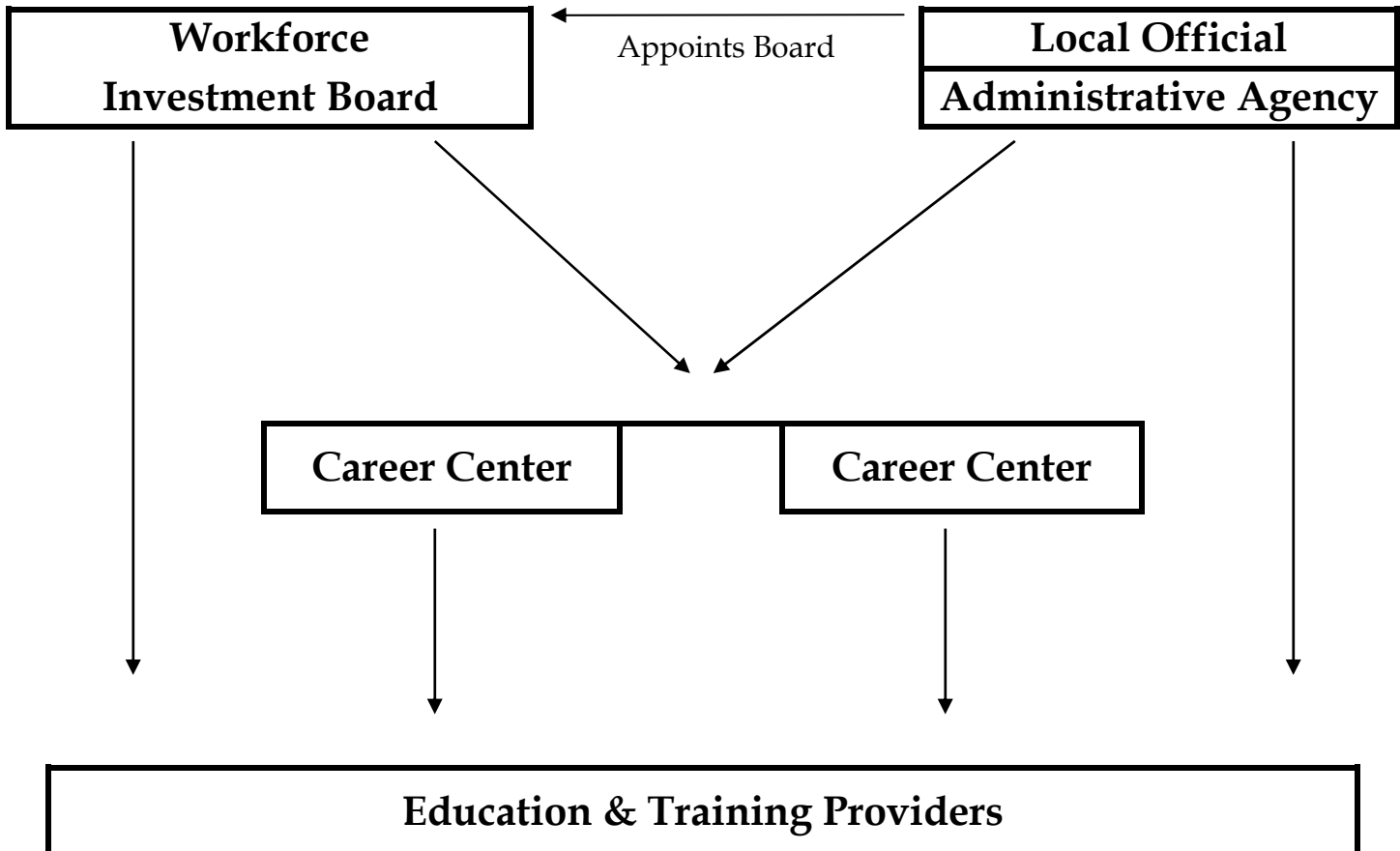


The Workforce Investment System in Massachusetts: Local Structure, Policy Setting, & Funds Flow



There are 16 geographic areas overseen by the Massachusetts model for implementing the federal Workforce Investment Act, in particular policy setting and funds flow.

The Career Centers are the system's gateway for people, money, and services; the newest stakeholder in this system; and mandated to offer universal public labor exchange services.

Other funds flow through this "WIA system" - including the Wagner Peyser Act, state funding for career centers, additional/discretionary WIA funds, and others.

There are several other systems in Massachusetts for delivering education, training, and employment services funded by a federal and state funds, including but not limited to:

- EOHHS agencies such as Department of Developmental Services, Department of Mental Health, and Massachusetts Rehabilitation Commission;
- Adult and Community Learning Services of the Department of Elementary and Secondary Education;
- Workforce Training Fund;

- services for specific target populations (e.g., Veterans, Immigrants and Refugees, and Prisoners/Releasees).

*This chart first appeared in a 2002 publication of the Massachusetts Workforce Alliance.
[See <http://massworkforcealliance.org/files/MWA-gov.agenda02.pdf>.] Geoff Beane, 2010*